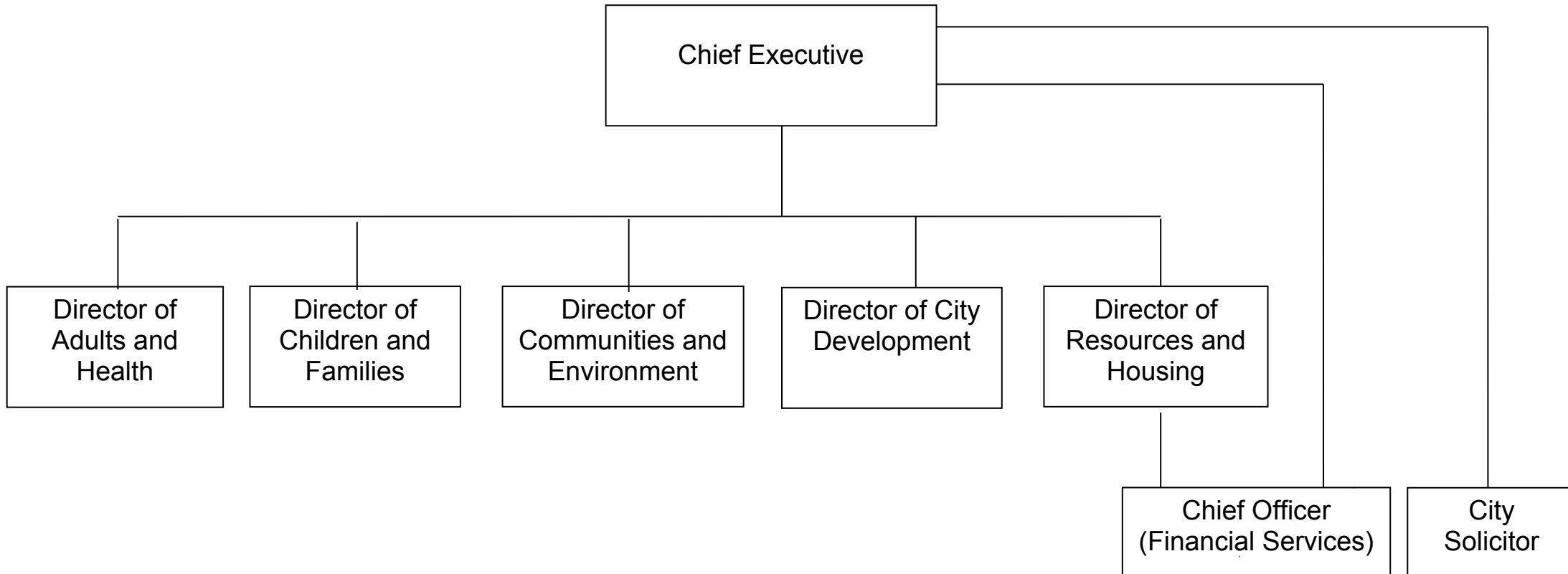


MANAGEMENT STRUCTURE



Notes:
The City Solicitor is the statutory Monitoring Officer
The Chief Officer (Financial Services) is located within the Directorate of Resources and Housing and is the statutory Chief Finance Officer / S151 Officer
The Director of Adults and Health is the statutory Director of Adult Social Services
The Director of Children and Families is the statutory Director of Children's Services
The Director of Public Health is located within the Directorate of Adults and Health is the statutory Director of Public Health